



AVAILABLE 8/22/21

## RETAILER INFORMATION SHEET - RETAIL STAFF USE ONLY

# POWER BALL GAME ENHANCEMENT

We want to pick up the pace of the *Powerball*® game to deliver bigger, faster-growing jackpots to our players.

### GAME CHANGE HIGHLIGHTS

*Powerball*® is increasing the number of drawings from two to three nights a week (Monday, Wednesday and Saturday) to meet players' expectations. The additional ticket sales from a third weekly drawing are expected to:

- Produce bigger jackpots.
- Generate faster-growing jackpots on a weekly basis.
- Increase the number of cash prizes and jackpots awarded on an annual basis.
- Increase contributions to funding vital public programs and services.
- Multi-draw increasing from 10 to 24.

### MULTI-DRAW STEP DOWN SCHEDULE

Beginning on July 21, 2021, the step down process for multiple drawings begins. What does this mean? After each drawing, there will be one less multi-draw available. The step down schedule is as follows:

- » 07/21/21 - 10 draws
- » 07/24/21 - 9 draws
- » 07/28/21 - 8 draws
- » 07/31/21 - 7 draws
- » 08/04/21 - 6 draws
- » 08/07/21 - 5 draws
- » 08/11/21 - 4 draws
- » 08/14/21 - 3 draws
- » 08/18/21 - 2 draws
- » 08/21/21 - 1 draw
- » 08/22/21 - 25 draws (End of shutdown)

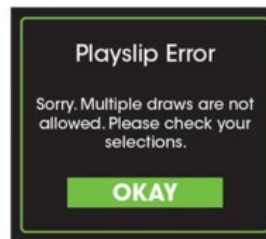
Ticket sales are suspended at 6:45 p.m. PT on Saturday, August 21, 2021, and will resume once the software batch has been released. This process may take several hours to process and may take into the early morning hours of August 22, 2021.

If too many multiple draws are selected prior to August 21, 2021, these error messages will appear during stepdown:

### HOW TO WIN POWERBALL®

MATCH	PRIZE	ODDS (Per \$2 Play)
	Jackpot*	1 in 292 million
	\$1,000,000	1 in 11.7 million
	\$50,000	1 in 913 thousand
	\$100	1 in 36.5 thousand
	\$100	1 in 14.5 thousand
	\$7	1 in 580
	\$7	1 in 701
	\$4	1 in 92.0
	\$4	1 in 38.3
<b>Overall odds 1 in 24.9</b>		

\*The Jackpot prize will be divided equally among multiple Jackpot winning tickets.



(Error message on Gemini Touch)



(Error message on GT1200)

### BENEFITS TO RETAILERS

As larger jackpots drive greater play frequency and sales, retailers will have the potential to significantly increase their commissions from lottery sales.

- \$50,000 selling bonus for selling a winning *Powerball*® Jackpot ticket.
- \$10,000 selling bonus for selling a winning second-tier *Powerball*® ticket.
- \$20,000 selling bonus for selling a winning *Double Play*® Jackpot ticket.

\*Selling bonus will be split if there are multiple winners.

## NEW PLAYSLIPS

- There will be new *Powerball*® playslips that will arrive the week of August 16. The carton will have the following 5" x 3" fluorescent green label attached to the exterior for easy identification.
- Please recycle any previous inventory of *Powerball*® playslips as they will no longer be valid after August 21, 2021.

WASHINGTON'S **POWERBALL**

NUMBER OF DRAWS 1 2 3 4 5 6 7 8 9 10 11 12 13 14 15 16 17 18 19 20 21 24

**DOUBLE PLAY** DOUBLE YOUR LUCK. FOR JUST A BUCK! +\$1 PER PANEL

**POWERPLAY** EXPAND YOUR NON-JACKPOT WINNINGS! +\$1 PER PANEL

**1/2 PANEL A**  
PICK 5<sup>TH</sup> QP: 14 15 16 17 18 19 20 21 22 23 24 25 26  
PICK 1<sup>ST</sup> QP: 1 2 3 4 5 6 7 8 9 10 11 12 13

**1/2 PANEL B**  
PICK 5<sup>TH</sup> QP: 14 15 16 17 18 19 20 21 22 23 24 25 26  
PICK 1<sup>ST</sup> QP: 1 2 3 4 5 6 7 8 9 10 11 12 13

**1/2 PANEL C**  
PICK 5<sup>TH</sup> QP: 14 15 16 17 18 19 20 21 22 23 24 25 26  
PICK 1<sup>ST</sup> QP: 1 2 3 4 5 6 7 8 9 10 11 12 13

**1/2 PANEL D**  
PICK 5<sup>TH</sup> QP: 14 15 16 17 18 19 20 21 22 23 24 25 26  
PICK 1<sup>ST</sup> QP: 1 2 3 4 5 6 7 8 9 10 11 12 13

**1/2 PANEL E**  
PICK 5<sup>TH</sup> QP: 14 15 16 17 18 19 20 21 22 23 24 25 26  
PICK 1<sup>ST</sup> QP: 1 2 3 4 5 6 7 8 9 10 11 12 13

See Instructions ONCE A TICKET HAS BEEN PRINTED. IT

**HOW TO PLAY POWERBALL**

Use only blue/black pen or pencil for marking selections. Do NOT erase. Mark the VOID box for that panel if needed and move to the next.

Each playslip has 5 panels, titled A through E. Each panel is one play for \$2. Double your luck with **DOUBLE PLAY** for \$1 per panel. Expand your non-jackpot winnings for \$1 per panel with **POWERPLAY**.

Select 5 numbers from 1 to 69 in the upper section and your **Powerball**® number from 1 to 26 in the lower section.

If you want the computer to randomly select your numbers for a panel mark the "QP" circle for the upper and/or lower sections.

If you want to use the same numbers for more than one drawing, mark the circle for "Number of Draws".

Check your playslip for accuracy before presenting to the retailer. Once a **Powerball**® ticket is printed, it cannot be cancelled. All sales are final.

For Game Details **POINT CAMERA HERE**

Or see retailer for How to Play brochure

walottery.com

Overall odds of winning any prize 1 in 24.9

NOTE: Some or all of the present prizes may become pot-communal under certain circumstances as defined in the game rules. The jackpot prize will be divided equally among multiple jackpot winning tickets.

**POWERBALL GAME RULES**

Each ticket shall contain the selections played in the corresponding panels, the drawing date and the ticket cost. A ticket is the only valid proof of play and the only valid receipt for claiming a prize. Player agrees to abide by Title 31B WAC and Chapter 47.70 RCW. The holder of a winning ticket for a drawing may win only one prize per panel but shall be entitled to the highest prize won by those numbers. A ticket is a bearer instrument. Neither Washington's Lottery nor its contractors shall be responsible for lost or stolen tickets.

Washington's Lottery has the right to publish information about prizes and prize winners. A prize claim form is a public record governed by Chapter 42.56 RCW.

For Winning Numbers: Call 1-800-645-7310  
1500 7th Avenue West, Seattle, WA 98106

Washington's Lottery proceeds benefit scholarship programs for Washington students and other vital state programs. Must be 18 or older to purchase.

KEEP IT FUN. KNOW YOUR LIMIT.  
walottery.com/responsibility

PROBLEM GAMBLING HELP & HOPE - 24/7  
Call/Text 1-800-547-6133 Chat: evergreenpgp.org Information: evergreenpgp.org

02A008-06 A1 DOP 08/21

(SAMPLE PLAYSLIP AND PACKING LABEL)



## DOUBLE PLAY®

Double Play® is a new add-on feature to the *Powerball*® game. For an additional \$1 per play, players will have a second chance to match their selected or quick pick *Powerball*® numbers in a second drawing with a top prize of \$10 million.

Players could win on both games.

Powerplay® does not apply to Double Play® winning amounts.

The Double Play® drawing will be held after every *Powerball*® drawing on Monday, Wednesday, and Saturday. The first Double Play® drawing will be held on Monday, August 23.

MATCH	PRIZE	ODDS (Per \$2 Play)
●●●●●●●●	\$10,000,000	1 in 292 million
●●●●●●●○	\$500,000	1 in 11.7 million
●●●●●●○●	\$50,000	1 in 913 thousand
●●●●●○●●	\$500	1 in 36.5 thousand
●●●●○●●●	\$500	1 in 14.5 thousand
●●●○●●●●	\$20	1 in 580
●●○●●●●●	\$20	1 in 701
●○●●●●●●	\$10	1 in 92.0
○●●●●●●●	\$7	1 in 38.3
<b>Overall odds 1 in 24.9</b>		

TERM # 7777777 138-009908007-205701

WASHINGTON'S **POWERBALL** **POWERPLAY**

Overall Odds 1 in 24.9 (\$2 play)  
PowerPlay - No  
DoublePlay: Yes

**TRAINING TICKET**  
**NOT FOR SALE**

POWERBALL  
A. 12 43 48 54 58 QP 14 QP

Wed Nov 15 95  
010581 PRICE \$3.00

**TRAINING TICKET**  
**NOT FOR SALE**  
SIGN ON BACK OF TICKET BEFORE  
PRESENTING TO RETAILER  
PRINTED 11/14/1995 07:23:40 PM

(SAMPLE DOUBLE PLAY TICKET)

Please contact your Washington's Lottery District Sales Representative with any additional questions or visit walottery.com for details. Must be 18 or older to purchase. Keep it fun. Know your limit.